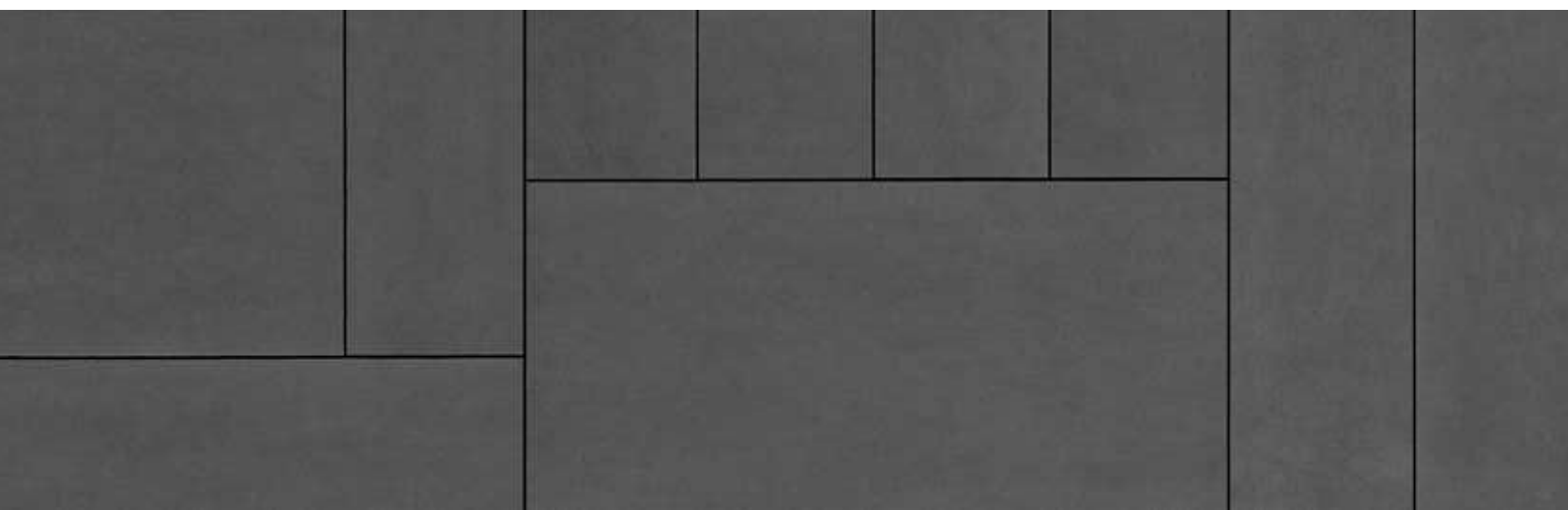


 **EQUITONE**  
Fibre cement facade materials





# EQUITONE

EQUITONE is a through-coloured facade material designed by and for architects. Our company has produced these façade panels since the 1950´s under the name "Eternit". Every EQUITONE panel is unique, showing the raw, untreated texture of the fibre cement base material. Fibre cement is a cement composite material that consists of cement, cellulose and mineral materials, reinforced by a visible matrix. Nothing else. The EQUITONE material comes in a maximum panel size of 1,25 x 3m (4´ x 10´) and can be transformed into any size or shape in the workshop or on-site. Furthermore, the material can be perforated or printed. Visible and invisible rainscreen fixing methods can be used including riveting, screwing and bonding on metal or wood supporting frames. No matter what design options you explore, the through-coloured nature of EQUITONE assures crisp, monolithic details.



LT20



LT60



LT90

Shadow effect:

8:00 AM



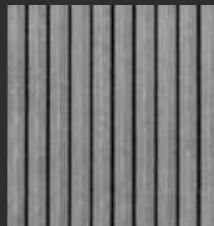
9:00 AM



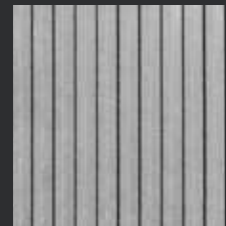
10:00 AM



11:00 AM

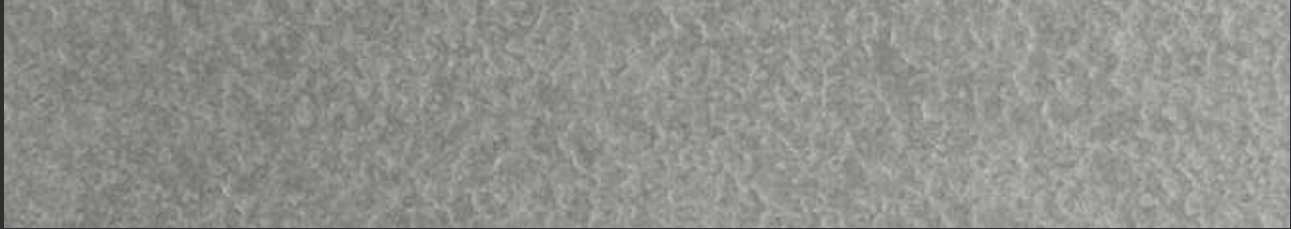


12:00 Midday



# EQUITONE [ linea ]

EQUITONE [linea] is a unique 3D shaped, through-coloured facade material that plays with light and shadow. EQUITONE [linea] displays a linear texture that highlights the raw inner texture of the core fibre cement material. Every moment of the day, the changing angle of the daylight gives the facade material a different aspect. The material comes in a large panel size and can be transformed into any size or shape in the workshop or on site. No matter what design options you explore, EQUITONE's through-coloured nature guarantees crisp, monolithic details. Both visible and invisible fixing options exist for EQUITONE [linea].



LA 20



LA 60

# EQUITONE [lunara]

EQUITONE [lunara] is a through-coloured fibre cement panel with a surface resembling a lunar landscape that demonstrates the natural quality of fibre cement as a material. The special production process makes each panel unique in terms of its colour, texture and surface, with a pattern that is not repeated. The rough, unpolished surface looks as if it was created naturally and invites you to touch it. The material comes in a large panel size and can be transformed into any size or shape in the workshop or on site. No matter what design options you explore, EQUITONE's through-coloured nature guarantees crisp, monolithic details.



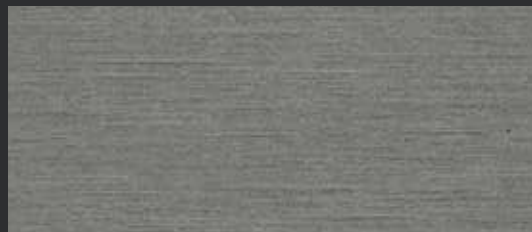
TE90



TE15



TE00



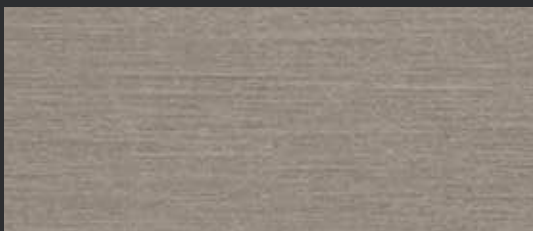
TE20



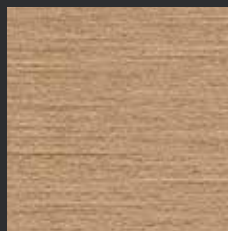
TE10



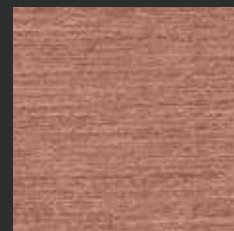
TE85



TE60



TE30



TE40



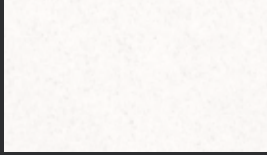
# EQUITONE [tectiva]

EQUITONE [tectiva] is a through-coloured facade material, characterised by a sanded surface and naturally occurring hues within the material.

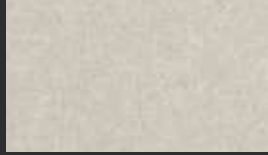
Every tectiva panel is unique, strongly expressing the raw texture of the core fibre cement material. The material comes in a large panel size and can be transformed into any size or shape in the workshop or on site.

No matter what design options you explore, EQUITONE's through-coloured nature guarantees crisp, monolithic details.

# THROUGH-COLOURED



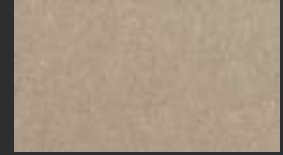
N164



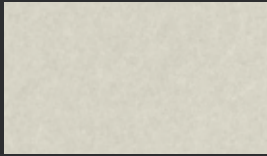
N154



N861



N961



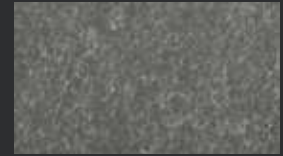
N162



N163



N211



N252



N161



N892



N250



N294



N891



N251

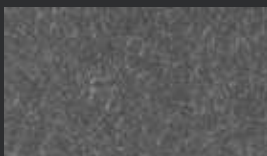


N073



N074

# SPECIAL COLOURS



N281



N661



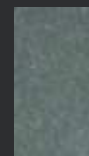
N662



N593



N594



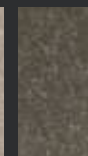
N411



N412



N991



N972



N331

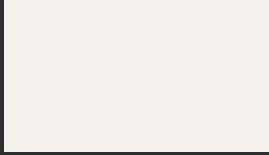


N359

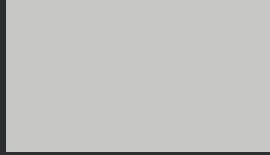
Other colours available on request, subject to minimum order quantities.

# EQUITONE [natura]

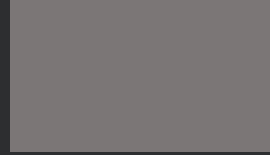
EQUITONE [natura] is a through-coloured facade material. Every EQUITONE [natura] panel is unique, subtly displaying the raw texture of the core fibre cement material. The material comes in a large panel size and can be transformed into any size or shape in the workshop or on site. No matter what design options you explore, EQUITONE's through-coloured nature guarantees crisp, monolithic details.



PW 141



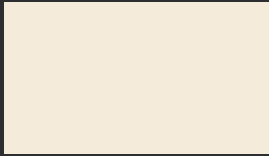
PG 243



PG 241



PA 041



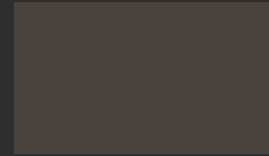
PW 841



PG 843



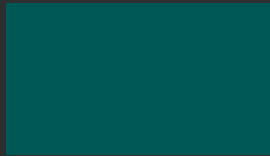
PG 844



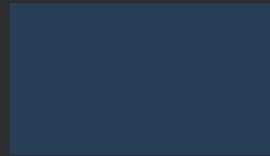
PA 944



PG 542



PG 546



PG 444



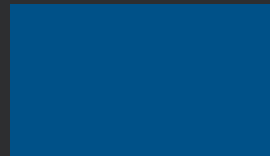
PG 342



PG 642



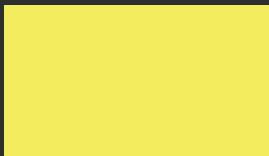
PG 545



PG 443



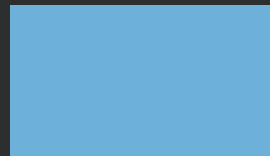
PG 341



PG 641



PG 544



PG 442



PG 742

Other colours available on request, subject to minimum order quantities.

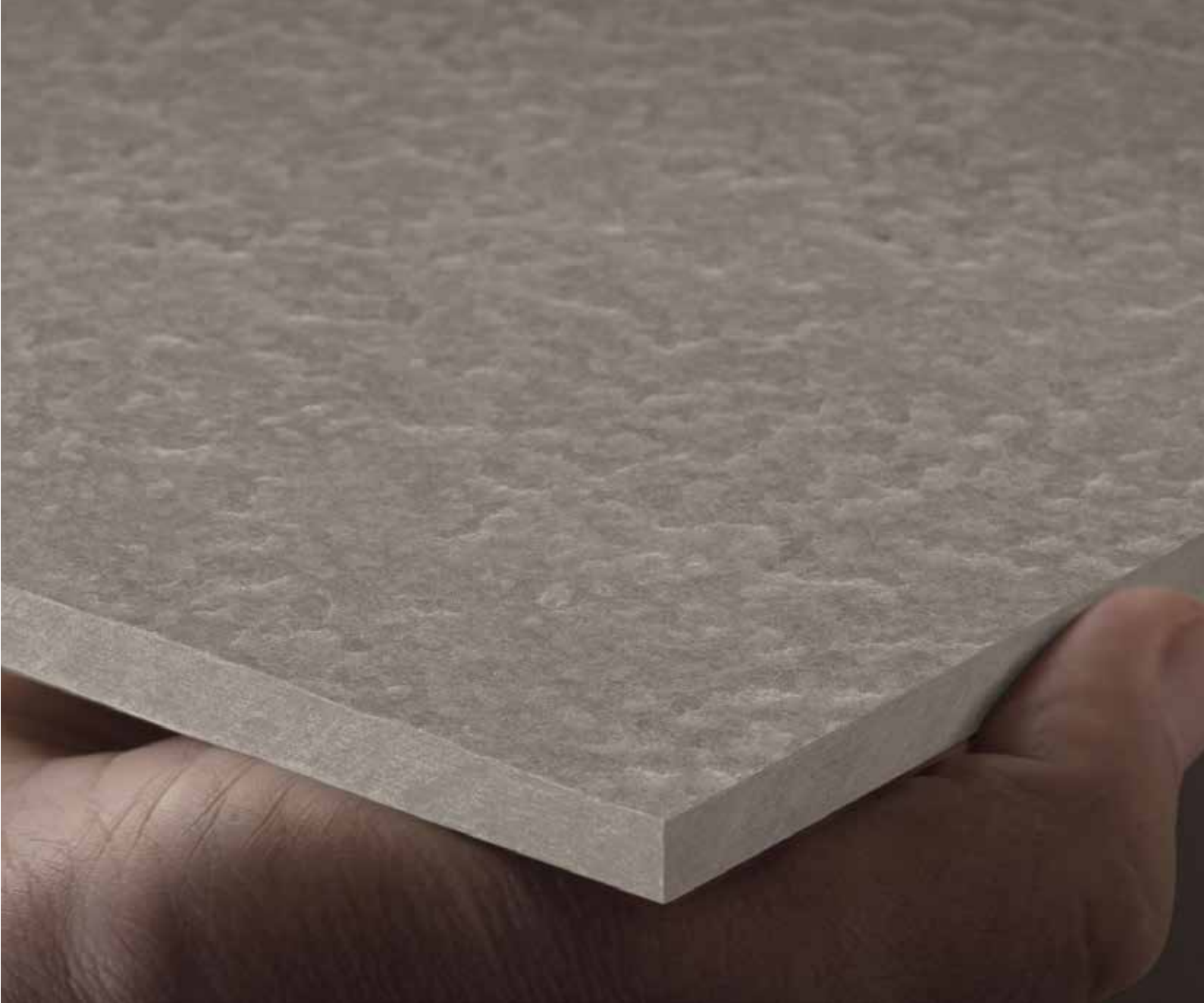
# EQUITONE [pictura]

EQUITONE [pictura] is a fibre cement facade material with an ultra matt architectural finish. Thousands of custom-matched matt project colours are available on request. The material comes in a large panel size and can be transformed into any size or shape in the workshop or on site. The material can also be perforated or printed. No matter what design options you explore, EQUITONE material is ideal for crisp detailing.

## DIMENSIONS

	THICKNESS	WIDTH	LENGTHS
EQUITONE [linea]	8 mm - 10 mm	1220 mm	2500 - 3050 mm
EQUITONE [lunara]	8 mm - 10 mm	1220 mm	2500 - 3050 mm
EQUITONE [tectiva]	8 mm	1220 mm	2500 - 3050 mm
EQUITONE [natura]	8 mm - 12 mm	1250 mm	2500 - 3100 mm
EQUITONE [pictura]	8 mm - 12 mm	1250 mm	2500 - 3100 mm



This colour chart shows the broad range of available colours. However, a 100% accurate representation of the colours is not technically feasible in this overview. The final choice of colours needs to be based on samples. Request your sample at [www.equitone.com](http://www.equitone.com).



Arch: Arkitekterne Bjørk & Maigård ApS, Aalborg, Denmark

[equitone.com](http://equitone.com)

Follow us:

-  [equitone facade](#)
-  [equitone facade](#)