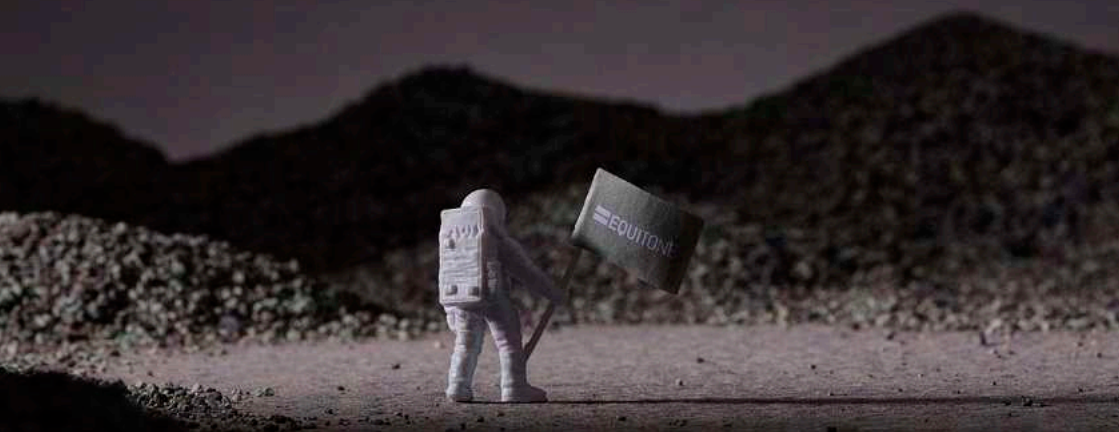


EQUITONE [lunara] A new façade material has landed.



 EQUITONE

EQUITONE [lunara]

As timeless as
the Moon.
As distinct as
its surface.





View an
architect
testimonial.



Inspired by the raw beauty of the Earth's satellite, the new EQUITONE [lunara] façade panel looks like something from another planet.

Its fascinating surface of irregular elevations and depressions evoke the Moon's cratered landscape, emboldening architects and designers to create visionary projects.

EQUITONE [lunara]

Inspired by the unpredictable beauty of the moon.

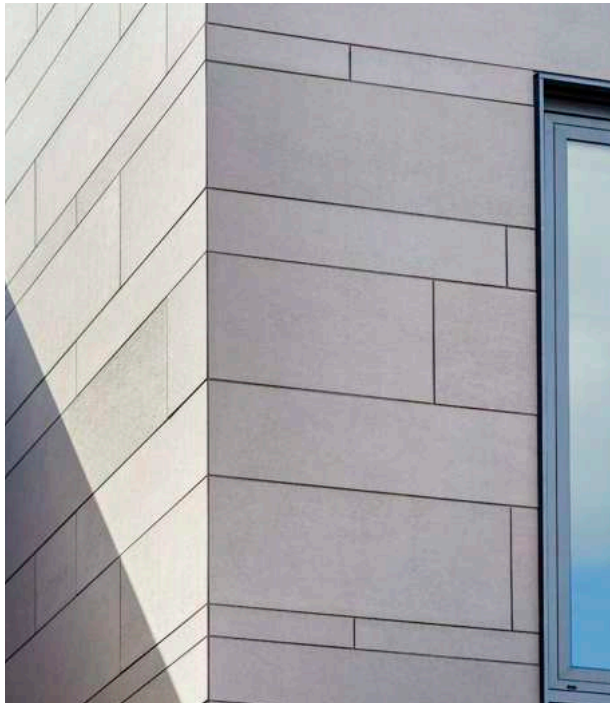
Aesthetic

The random, non-repeating surface structure of EQUITONE [lunara] is reminiscent of the cratered landscape of the moon.

Thanks to the special production process of our fiber cement, no two boards are alike - every façade is unique.

Specification

Thickness	10mm	
Panel sizes	2500 x 1220mm	3050 x 1220mm
Panel weight	3.6 lbs ft ²	
Colors	EQUITONE [lunara] LA60 - Beige	EQUITONE [lunara] LA20 - Gray




Request your sample today.

equitone.com



 EQUITONE



Experience EQUITONE [lunara] in your environment with this augmented reality experience. 





 **EQUITONE**
Fibre cement facade materials

E-Mail: info.usa@equitone.com
Telephone Number: +1-865-268-0654

Follow us:
 facebook.com/equitone.facade
 [@equitone_us](https://instagram.com/equitone_us)

www.equitone.com